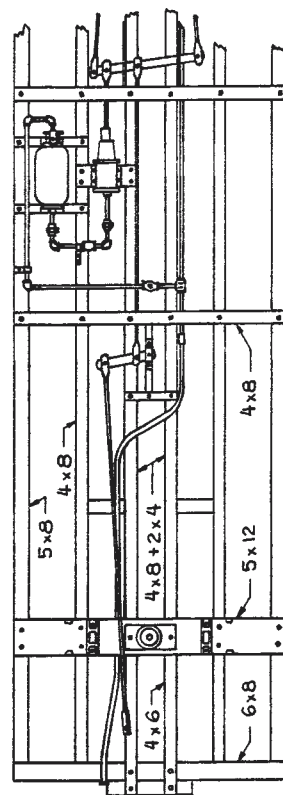


# SILVERTON NORTHERN BOXCAR NUMBER 2006

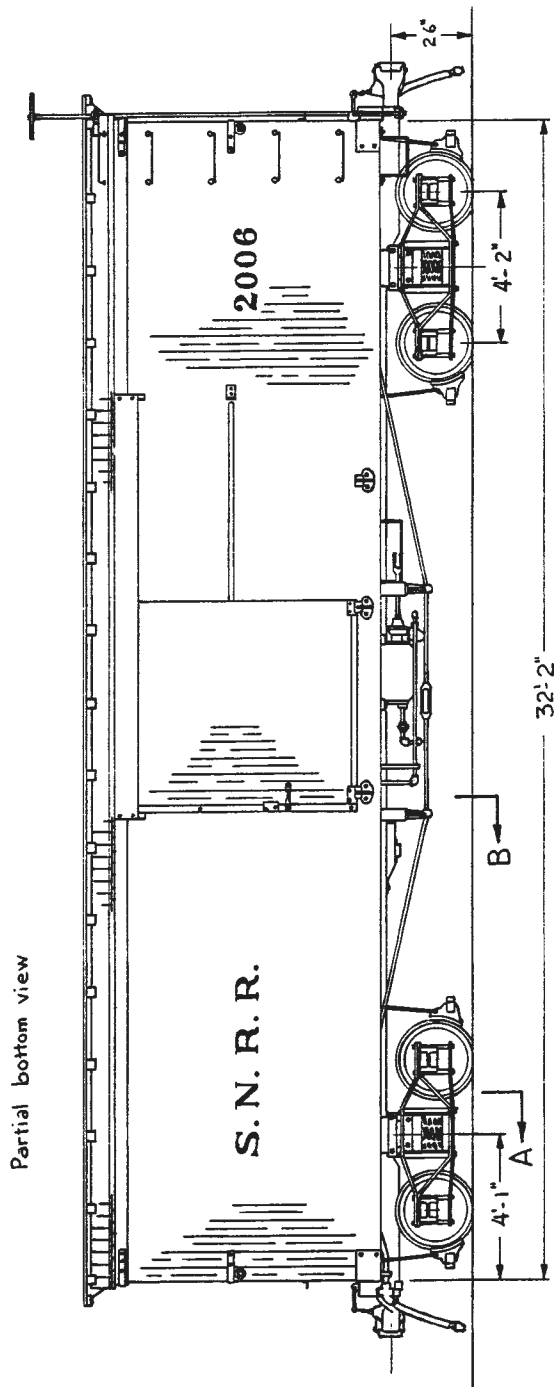
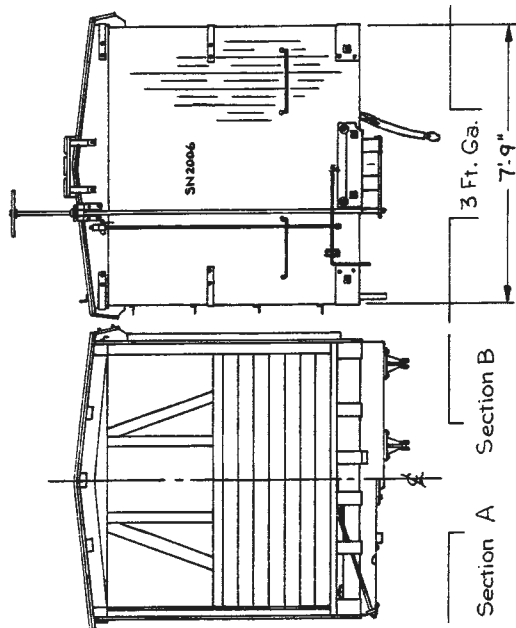
DRAWING BY HERMAN DARR

© HERMAN H. DARR 1976

THE SILVERTON, GLADSTONE & NORTHERLY RAILROAD came into being in 1899 and ran seven miles, from Silvertown, Colorado to the Gold King Mine at Gladstone. American Car and Foundry built the boxcars in 1899 as SG&N numbers 1000-1009. In 1910, the railroad leased itself and its cars to the neighboring Silvertown Northern Railroad and the car numbers changed to SN series 2000-2009. Five cars survived to the end of the railroad in 1942. Capacity 40,000 lbs., Lt. Wt. 22,800 lbs., Air Brakes: Westinghouse 6"x8" type K.—HHD



1:64 SCALE  
3/16-INCH = 1 FOOT



Magazine purchaser may make photocopies of these drawings locally as an aid to his personal or commercial modelmaking or tool designing, but purchaser does not have the right to distribute copies of the drawings to others.

## CLASSIFIED ADS

Classified advertising rates are as follows:

\$5.00 for 15 words or less; no charge for name and address. Additional words 25-cents each up to 30 words. Words over 30 are 75-cents each. You must pay in advance for your ad. Two ads maximum per advertiser per issue.

Please furnish your street address for FINESCALE RAILROADER's confidential records if your ad has a P.O. box number. Type or print your ad neatly. Send ad and payment to FINESCALE RAILROADER, 1574 Kerryglan Street, Westlake Village, CA 91361.

WE MUST HAVE RECEIVED YOUR AD BY:

10/1 for the December/January issue

4/1 for the June/July issue

No refunds or cancellations. Thank you very much.

**For Sale:** SELLING LARGE SCALE AT ABOUT HALF PRICE. Light indoor use or new. Have LGB, USA Trains, and Roundhouse (MDC). Also books: *Colorado Midland* (Abbot), *Articulated Steam Locomotives* (La Massena), *The Midland Route*, (McFarland), *Virginia & Truckee* (Ferrell). Almost mint at \$150.00 each. Herb Cearley, 6751 E. 9th Street, Long Beach, CA 90815.

**For Sale:** Send SSAE for train list. LGB, Bachmann, USA, Delton. Dave Osdoba, 120 Ridge Lane, Mankato, MN 56001. Phone 507-388-2497 or 623-935-4607. E-mail: [ddosdoba@msn.com](mailto:ddosdoba@msn.com).

**For Sale:** Back issues of FINESCALE/OUTDOOR RAILROADER, *NG Gazette*, *Garden Railways*, *Mainline Modeler* plus over 300 other rail titles and two thousand used books. \$1.75 stamped LSAE for 70 page catalog. Buying collections! **Railpub**, 161 Gilmore Road, Wrentham, MA 02093. [www.railpub.com](http://www.railpub.com)

**Remember:** The next FINESCALE RAILROADER publication will be the  
**2006 NARROW GAUGE ANNUAL**  
mailing September 2005.

### On3/On30 18' Gondola Kits



\*Trucks & couplers not included

Detailed easy to assemble kit, hand cast in resin. Brake wheel, stirrup steps, truss rods details are included. \$31.50+\$5.00 shipping. Check & M.O. Other kits are available. SASE for list.

**Fire  
BOX  
MODELS**

**Firebox Models**  
5823 N. Mesa, Suite 811  
El Paso, TX 79912

[www.fireboxmodels.com](http://www.fireboxmodels.com)

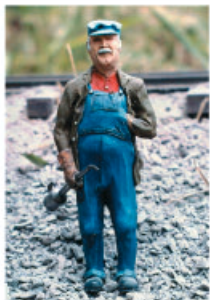
### BUILDINGS and BRIDGES

**Award Winning STRUCTURES - Made in AMERICA!**  
OVER 350 products for 1:20.3 to 1:29... **Full Size Drawings**  
**KITS \* scale lumber \* doors & windows \* textured styrene**



32 page catalog, \$4 in U.S.; \$6 outside U.S. (check or cc)

**GARDEN - TEXTURE**  
P O Box 690444 dept. J Charlotte, NC 28227  
(704)847-7169 [www.gardentexture.com](http://www.gardentexture.com)



**Figures,  
Detail Parts,  
Limited  
Run Models**

**CATALOG  
\$3.00  
POSTPAID**

**Little Railways**  
1621 Cherry Street  
Williamsport, PA 17701  
[mr1to20@suscom.net](mailto:mr1to20@suscom.net)

### CTT "SCALE RULERS"

1:22.5 Scale Rule - C.T.T. INC. \* DALLAS, TEXAS

**Available in 10 Scales:**

1:22.5 1:24 1:25 1:32 1:35  
1:48 1:64 1:72 1:87 1:160

- CLEAR PLASTIC
- FLEXIBLE
- FULL 1' LENGTH

At fine hobby & train stores or include  
\$2.00 S/H. TX res. add 8 1/4% tax.  
CTT, 109 Medallion Center, Dallas, TX 75214

**only \$2.99 each**

## INDEX OF ADVERTISERS

25th Nat'l. NG Convention	64
Accucraft Trains	2, 61
ARISTO-CRAFT TRAINS	67
Bachmann Industries	57
Backwoods Miniatures	56
Barry's Big Trains	59
Caboose Hobbies	56
Coffman Graphic Solutions Co.	59
Crystal River Products	58
CTT	53
Cumberland Model Engineering	63
Darr's Scale Models/Herman Darr	62
Eaglewings Iron Craft	66
Eldorado Railways	59
Figures by Carlo	63
Firebox Models	53
Garden Metal Models	62
Garden-Texture	53
H&R Trains	62
Hartford Products, Inc.	63, 66
Kadee® Quality Products	63
Little Railways	53
Lone Star Bridge	60
MBV Schug	62
Miller Models	58
Northwest RCS (NWRCS)	63
Phoenix Sound Systems	55
Precision Scale Company	65
RGSRR Hobbies	60
Shawmut Car Shops	63
Sierra Valley Enterprises	59
Southwest Narrow Gauge	54
Steam In The Garden	59
Sunset Valley Railroad	56
The Scale Card	59
The Train Stop	63
TimberTimes	58
Trackside Details	59
USA Trains	Back Cover
Western Scale Models	60
Westlake Publishing Co.	62, 66

# "We have the NARROW GAUGE for you"

## On3 - LOCOMOTIVES and ROLLING STOCK - On3

All BLW K27's and K28's have Lights, Coal Loads and are Sound Equipped!

★	B.L.W. D&RGW K28, #473, 476, 478, Moffat Herald, Circa 1930's	\$ 1,895.00	
	B.L.W. D&RGW K28, #473, 476, Flying Grande, Circa 1940's	\$ 1,895.00	
	B.L.W. D&RGW K28, #473, Bumble Bee	\$ 2,145.00	
	Balboa "Master Series" C-21, #361, Pro. Painted, Light Weather, N.I.B., 30's & 40's Versions	\$ 1,275.00 ea.	★
	Beaver Creek W.S.L. Co. Shay #5, F.P., New In The Box	\$ 1,995.00	
	P.S.C. 35 Ton Climax, F.P., No Ltrs.	\$ 995.00	
	Max Gray D.&R.G.W. K28 #473, Circa 40's, Pro Painted, Light Weather, N.I.B.	\$ 1,295.00	
	P.S.C. C-21 D.&R.G.W. #360, Circa 30's, Crown Model	\$ 1,985.00	
	P.S.C. C-21 D.&R.G.W. #361, Circa 30's, Crown Model or Circa 40's	\$ 1,985.00	
	P.S.C. 17103-1, 37 Ton Heisler W.S.L.C., F.P., Crown Model #3	\$ 1,995.00	
★	B.L.W. K27 D.&R.G.W. #452, Circa 30's, Black Boiler, also #452, Circa 40's	\$ 1,795.00	
	B.L.W. K27 D.&R.G.W. #453, Circa 30's, Black Boiler	\$ 1,795.00	
	B.L.W. D&RGW #454 1930's, Moffat Herald, Plow, Background Weathered	\$ 1,950.00	
	B.L.W. D&RGW #454 1940's, Flying Grande *1 FOOT BOARD PILOT, Tool Box, Backup Light	\$ 1,795.00	★
	B.L.W. D&RGW #455 1930's, Moffat Herald, Std. Pilot w/Tool Box	\$ 1,795.00	
	B.L.W. D&RGW #456 1930's, Moffat Herald *1 FOOT BOARD PILOT w/Tool Box, also #456, Circa 40's	\$ 1,795.00	
	B.L.W. D&RGW #458 1930's, Moffat Herald, Std. Pilot w/Tool Box, Coal Boards, also #458, Circa 40's	\$ 1,795.00	
	B.L.W. K27 D.&R.G.W. #459, Pro. Ptd., Lt. Weather, Backup Light, Circa 40's	\$ 1,795.00	
	B.L.W. D&RGW #459 1930's, Moffat Herald, Std. Pilot w/Tool Box, Coal Boards, Backup Light, also #459, Circa 40's	\$ 1,795.00	
	B.L.W. D&RGW #461 1930's, Moffat Herald, Std. Pilot w/Tool Box, Std. Tender, also #461, Circa 40's	\$ 1,795.00	
★	B.L.W. RGS #461 Sunrise Herald, Coal Boards, Plow	\$ 1,795.00	
	B.L.W. K27 D.&R.G.W. #464, Circa 30's, Black; also #464, Circa 40's	\$ 1,795.00	★
	P.S.C. K27 #454, Circa 30's, Green Boiler, Crown Model	\$ 2,095.00	
	P.S.C. K27 #454, Circa 30's, Black Boiler, Crown Model; also #454, Circa 40's	\$ 2,095.00	
	P.S.C. K27 #461, Circa 40's, Black Boiler, Crown Model; also #461, D.&R.G.W., 30's	\$ 2,095.00	
	P.S.C. K27 R.G.S. #461, Sunrise, Crown Model	\$ 2,095.00	
	P.S.C. D&RGW #453, Green Boiler, Flying Grande, Crown	\$ 2,095.00	
	P.S.C. D&RGW #453, Black Boiler, Flying Grande, Crown	\$ 2,095.00	
	B.L.W. R.G.S. Rotary 02, Rotary, Tender, Aux. Tender W12, 3 Pcs., F.P., w/Sound	\$ 895.00	
★	B.L.W. D&RGW Excursion Car 313, "Silver Vista" w/Interior	\$ 450.00	
	P.S.C. D&RGW Baggage Cars, #125, 126, 128, 129, 151 thru 159 - Few Left -	\$ 435.00	
	P.S.C. D&RGW Business Cars, #B2, B3, B7, F.P., Green, Lights, Glass, Interiors - Very Limited -	\$ 435.00	★
	P.S.C. F.P., C-16's, #223, 268, 268 Bee, 271	\$ 1,895.00	
	P.S.C. Silverton Baggage Car #126, Painted Silverton Colors - 2 Left -	\$ 435.00	
	P.S.C. D&RGW Open Vestibule Coach, 312, Green, Pre 1936 - Few Left -	\$ 435.00	
	P.S.C. D&RGW Open Vestibule Coach, 306 & 320, Green, Bay Window, Pre 1950 - Few Left -	\$ 435.00 ea.	
	P.S.C. D&RGW Open Vestibule Coach, 306 & 320, Silverton, 2 Stripes or 1 Stripe, Circa 1950 or Post 1955	\$ 435.00 ea.	
	P.S.C. Parlor Cars, Alamosa, Chama, Durango, Green - Few Left -	\$ 435.00	
★	P.S.C. Coach #280, Green, No Bay Window, and 284, Green, w/Bay Window - Reserve -	\$ 435.00	
	P.S.C. Coach #280, Silverton, Two Stripes - Reserve -	\$ 435.00	
	P.S.C. Coach #284, Silverton, One Stripe - Reserve -	\$ 435.00	★
	P.S.C. R.P.O. 65, 66 and 119, Green - Reserve -	\$ 435.00	
	P.S.C. R.P.O. x65, x66 and x119, M.O.W. Grey - Reserve -	\$ 435.00	
	P.S.C. #17435-1 D&RGW Kitchen Car, F.P., Grey #04255; Also (Unpainted Available - \$295.00)	\$ 328.00	
	P.S.C. #17437-1 D&RGW Water Car, Factory Painted #06217; Also (Unpainted Available - \$289.00)	\$ 309.00	
	B.L.W. C&S Cinder Car, Wood and Metal Prototype Construction	\$ 185.00	
	New Die Cast D&RGW/RGS K-27's, 7 Road Numbers, Green Boiler/Black Boiler, On3 and On30 - In Stock -	\$ 489.00 ea.	
	New Accucraft D&RGW #50, F.P., On3 or On30	\$ 199.00	
	New Accucraft Plymouth Diesel, F.P., On3 or On30	\$ 189.00	
★	P.S.C. D&RGW Baggage 111, 127, 163, 164, 165, 167, 168, 169 - Reserve -	\$ 435.00	
	P.S.C. Coaches 272, 283, 285, 286, 310, 312 - Reserve -	\$ 435.00	
	P.S.C. Coaches 319, 323, 325, 326, 327 Green; Silverton 319, 323, 327 - Arrived -	\$ 435.00	
	P.S.C. Combines 212 and 215: 4 Versions 212, 2 Versions 215 - Arrived -	\$ 435.00	
	P.S.C. Combines 202 and 210: Silverton Combines, Green - Reserve -	\$ 435.00	★
	P.S.C. Baggage Cars 111, 127, 169, w/Roof Walks and Handrails, Green	\$ 435.00	
	On3/On30 B.L.W. Drop Bottom Gons, 2nd Run, 700's & 800's, 30's & 40's, 40 New Numbers	\$ 199.00	
	On3/On30 B.L.W. High Side Gons, 30's & 40's Ltrd., Two Stake Styles, 40 Numbers	\$ 199.00	
	On3/On30 P.S.C. 5900 Series Stock Cars, 2nd Run, New Road Numbers	\$ 199.00	
	On3/On30 Mountain Models Die Cast K28's, All Versions and Bumble Bee	\$ 475.00	
	On3/On30 Mountain Models die Cast K27's, In Board 454, 456, 458, 461, All Versions	\$ 449.00	

See Our Website for Information On Special Versions of Combines 212 and 215 and Special Versions Baggage Cars 111, 127 and 169, Roof Walks and Hand Rails.

### CHANGING SCALES? WE'LL TRADE OR BUY YOUR COLLECTION.

See our Website for HOn3, Sn3 & Fn3 Inventories!

- Because of some lead times, prices are subject to change without notice. -



## SOUTHWEST NARROW GAUGE



P.O. Box 9987, Phoenix, Arizona 85068 • Fax: 602-943-1713 • Phone: 602-943-7046

E-Mail: [trains@i-sng.com](mailto:trains@i-sng.com)

Web: [www.i-sng.com](http://www.i-sng.com)



# PHOENIX

SOUND SYSTEMS

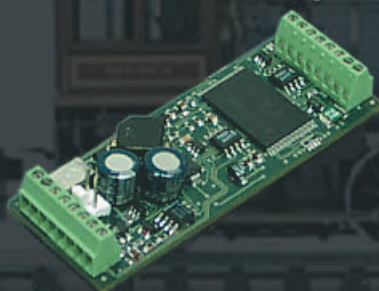
THE WORLD'S BEST SOUND  HAS A NEW LOOK!

New Trigger-Action Sounds and Effects...Coal Loading Water Fill Tunnel Fade and More!  
Circuitry Protected from incorrect installation and Short Circuits  
Real Time and Auto-Operation on the Same Board  
Big Boost™ is On-Board at No Extra Cost  
No Need for an Extra Battery Charger  
Lineout for Real World Applications

Simple Remote Programming  
Easy Installation

INTRODUCING

## BIG SOUND™ 2K2



Built-in DCC Decoder

Operates at 3 Volts for Slow Speeds

Power Output to Turn On/Off Other Devices

No Extra Opto Circuits required for RC

Download Sounds of 50 Locos with More to Come!

16 Bit Quality Sound—2 Watts of Power—in a Smaller Package  
With PC or Optional PSS Selector Switch You Can...Customize Sounds...Change Set-Up...Upgrade...Download Sounds

“NO OTHER  
ON-BOARD  
SOUND SYSTEM  
COMES CLOSE.”

► AUTHENTIC SOUND ► MUSEUM QUALITY ► EXPERT TECHNICAL SUPPORT

PHOENIX SOUND SYSTEMS, INC  
3502 WEST LIBERTY ROAD  
ANN ARBOR, MI 48103 USA



800 651-2444  
WWW.PHOENIXSOUND.COM  
DEALER INQUIRIES WELCOME!



# CABOOSE HOBBIES INC.

"The World's Largest Model Train Store"

Toll Free (Orders Only): (800) 886-1813

Phone: (303) 777-6766 ~ Fax (303) 777-0028

500 S. BROADWAY, DENVER, CO 80209-4002

Open Monday through Friday: 9:30am to 6pm; Saturday: 9am to 5:30pm; Sunday 11am to 5pm

Most Shipping: Fed-Ex Ground; Continental USA: \$7.95 ~ International Orders Encouraged, Actual Cost

## New Limited Edition Kits From



### Coin Laundry

**HO Scale**

HO Scale limited edition of 500 kits  
22781028 \$34.95



### Bingo's Pool Hall

**N, HO, O Scale**

Hydrocal with resin facade

N Scale 22782006 \$34.95

HO Scale 22781029 \$34.95

O Scale 227839 \$49.95

## 6 New HO Kits- It's A Whole Wild West Town!



General Store \$38.95

SKU# 10410204

Miner's Supply \$44.95

SKU# 10410205

Fire House \$38.95

SKU# 10410206

Assay Office \$38.95

SKU# 10410207

Bakery \$38.95

SKU# 10410208

Land Office \$38.95

SKU# 10410209

## Now Available:



## THE R.G.S. STORY

— VOLUME XI — DURANGO  
AND THE PERINS PEAK  
BRANCH

Featuring 321 B/W photos, 17 full-color views, and 26 maps. First 250 are signed & numbered.

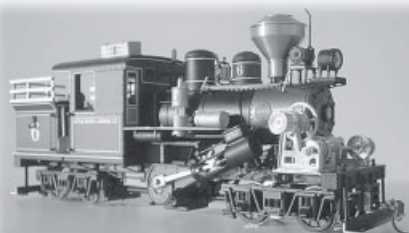
Hurry, order today!

**SKU# 136533**

**Our Price: \$64.29**

Check us out at [www.caboosehobbies.com](http://www.caboosehobbies.com)!

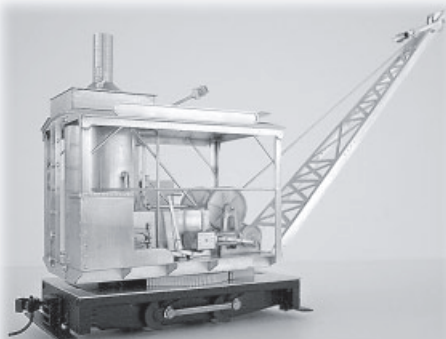
## AVAILABLE NOW !!!



DETAILING KIT FOR  
BACHMANN ON30  
CLIMAX: U.K. £38  
(INCLUDES SHIPPING)

ON30 STEAM  
CRANE-LOADER  
BODY KIT.  
FITS BACHMANN  
GAS-MECHANICAL  
0-4-0

MECHANISM:  
U.K. £48  
(INCLUDES SHIPPING)



**BACKWOODS  
MINIATURES**

11 NETHERTON SOUTHSIDE, NETHERTON,  
MORPETH NE65 7EZ ENGLAND  
PHONE: +44-1669-630255 FAX: +44-1669-630260  
SALES@BACKWOODSMINIATURES.COM

[www.backwoodsminiatures.com](http://www.backwoodsminiatures.com)

## Complete code 250 track system



Catalog and track samples - \$3

- More realistic than code 332 track
- Choice of aluminum, brass or nickel-silver rail
- Choice of mainline, narrow or dual gauge ties
- Choice of 10 types of switch, from #3 to #10
- Switchstands, railbenders, clamps
- Everything available - **no waiting!**
- Visit our website [www.svrronline.com](http://www.svrronline.com) for full color photos of all our products.

Dealer for Aster, Accucraft, Roundhouse, Cheddar, Kadee.  
We have engines in stock - please call

Tel/Fax 253-862-6748 email [sales@svrronline.com](mailto:sales@svrronline.com)



# ONE IS NEVER ENOUGH

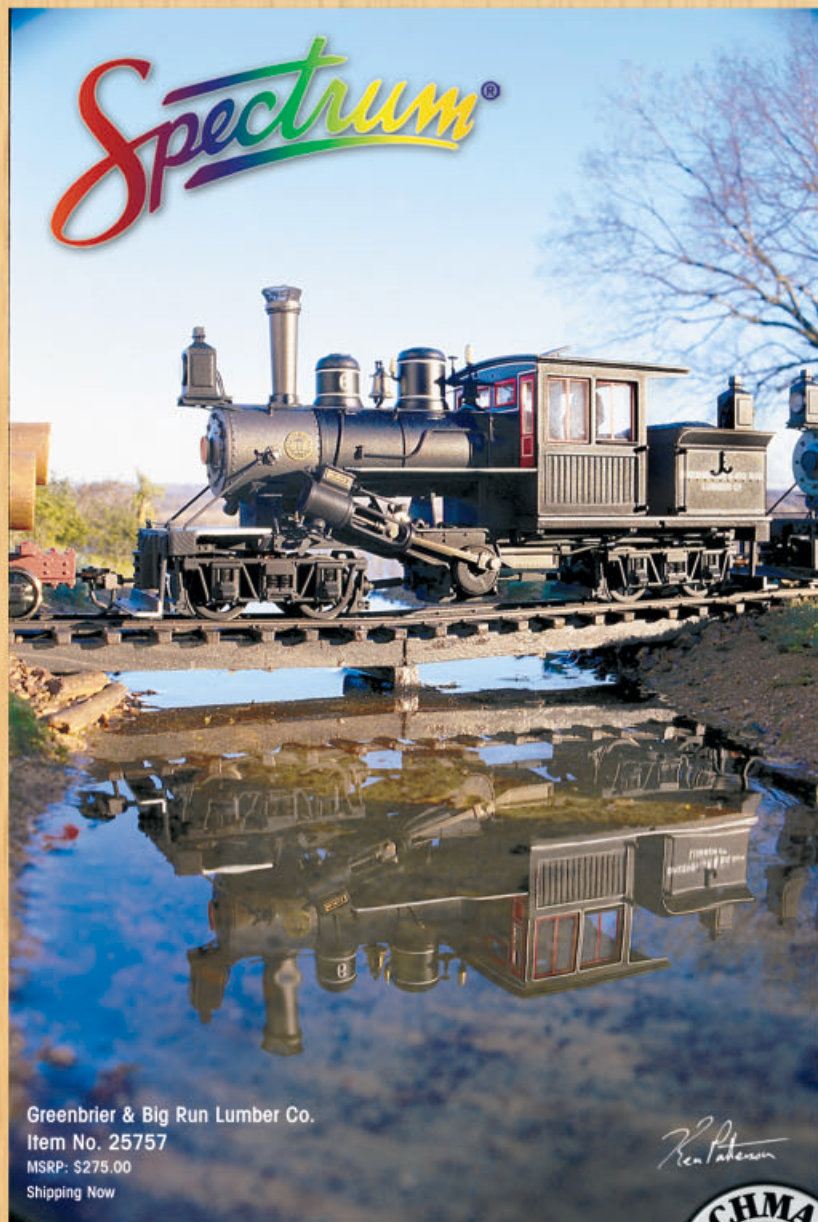
## On30 Scale

### 28-Ton Two Truck Climax

In the late 1800s, the Climax Locomotive Works paved the way for geared locomotive development with innovative designs and improvements to existing technology. One such offering was the 28-Ton Two Truck Climax.

Inspired by this pioneering attitude, we're pleased to add multiple On30 Two Truck Climaxes to our award-winning roster of geared locomotives. And this locomotive is no pretender, equipped with a prototypical center gearbox that distributes power to two truck gearboxes. To top it all off, this DCC-ready locomotive comes in three cab styles, with wood, coal, and oil loads included with all versions. With this assortment of configuration options, our On30 Climax is perfect for logging or mining operations large and small, and that's sure to put a smile on any modeler's face.

Visit your local hobby retailer today and demand several Climaxes today!



#### Features Include:

- DCC ready
- sound ready
- 5-pole, skew-wound motor
- prototypical center gearbox distributes power to two truck gearboxes
- three cab styles (double-panel wood single-panel wood; and steel cab with modern headlights, generator, and air pump)
- die-cast frame, cab, and boiler
- wood, coal, and oil load included with all roadnames



Pocahontas Lumber Co.  
Item No. 25760



Midwest Quarry & Mining Co.  
Item No. 25761



Little River Logging Co.  
Item No. 25763



Colorado Mining Co.  
Item No. 25762



Painted Unlettered (black)  
Item No. 25799

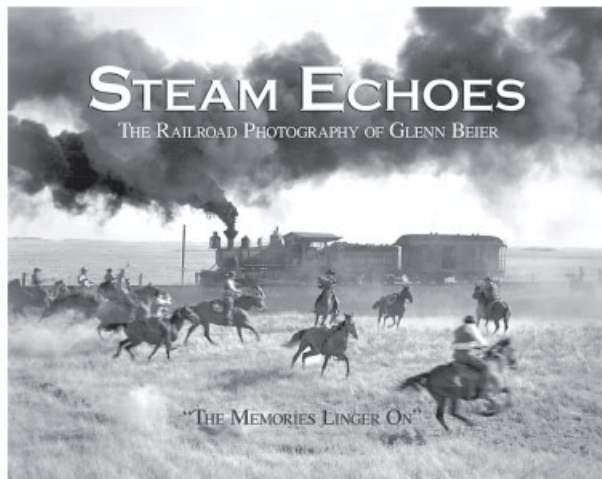
Visit the Bachmann Gift Shop at  
[www.bachmanntrains.com](http://www.bachmanntrains.com)

Our virtual shelves feature  
our 2005 catalog and  
Bachmann gift items for  
model railroaders of  
all ages.



## BACHMANN





# New Book!

## *Steam Echoes*

### *The Railroad Photography of Glenn Beier*

Glenn Beier is a photographic artist. Over fifty years ago, after graduating from the prestigious Art Center School of Photography in Los Angeles, he quietly began seeking out and photographing the last vestiges of steam-era railroading in the western United States.

Inspired by those who came before him, Glenn purposely sought to capture the essence of narrow gauge, shortline and logging railroads of the West. Not satisfied with typical locomotive portraits, Glenn strove to

create images that would evoke feelings of the power, massiveness and "aliveness" of the soon-to-vanish steam locomotives working in their natural habitats, and to record the character and individuality of the people who, on a daily basis, brought them to life and put them to work.

His success in this lifelong endeavor speaks for itself—the stunning artistry of his black and white images will inspire us for generations to come.

This 11" x 8-1/2" 288-page hardcover horizontal format book features SP Steam, The Sierra RR, West Side Lbr. Co., Pickering Lbr. Corp., Feather River Rwy., SP Narrow Gauge, D&RGW Narrow Gauge, Southwest Lbr. Mills, Hillcrest Lbr. Co. Ltd. and more!

Price: \$58.95 plus \$4.50 S/H in US. (Canadian and overseas orders are billed at cost, credit card orders only.) To order, call our toll-free number, write, Fax or place your order at our secure server website. **Order your copy today!** Dealer inquiries invited.

**TimberTimes**

PO Box 219  
Hillsboro, OR 97123  
1 (800) 821-8652  
Fax: (503) 615-8557  
[www.timbertimes.com](http://www.timbertimes.com)



## WINDOWS AND DOORS



- No grain running the wrong way
- Mullions and thickness perfectly to scale
- Stain or paint sash and trim separate colors
- Build windows closed, open, or partly open
- You may build sashes with mullions on both sides of glazing
- Each kit includes 10 windows and construction jigs

**Introductory Price \$12.00** - Call for HO scale or plywood construction

The  
**FINESCALE RAILROADER**  
Collection

- 601-31: 8 pane
- 601-32: 12 pane
- 601-33: 18 pane
- 5 panel door

**CRYSTAL RIVER**  
  
**PRODUCTS**

P.O. Box 598, Conifer, CO 80433 • Ph. 303-697-1472 • Fax 303-697-1179  
email: [crprod@earthlink.net](mailto:crprod@earthlink.net)

**miller models**  
custom model builders

- Your Exclusive Source for **Scale Sound II**  
Digital Sound Modules (ITC)  
NOW...

add the incredible realism of environmental & industrial sounds to your layout without all the hassle.

- Adaptable for outdoor use.
- The Quality and Selection is unmatched.
- Visit Our Web Site And Hear for Yourself.

e-mail [info@millermodels.com](mailto:info@millermodels.com)  
P.O. Box 84 Middletown, MD 21769  
**[www.millermodels.com](http://www.millermodels.com)**





**STEAM!** It's the real thing...

Put more excitement in your hobby!  
See for yourself with a subscription to

## Steam in the Garden

PO Box 335  
Newark Valley, NY 13811  
Phone: 607-642-8119  
FAX: 253-323-2125

CREDIT CARDS OK



e-mail: docsteam@steaminthegarden.com  
web site: www.steamup.com

## TRACKSIDE DETAILS

Now a product line of  
**Valley Brass & Bronze**  
Pinedale, California  
559-439-0419

200+ detailed brass (only)  
castings in 1:22.5 and 1:20.3 scales

Send \$3.50 for Full Color Catalog

## TRACKSIDE DETAILS

7070 N. Harrison Avenue  
Pinedale, CA 93650

**The Scale Card™** Since 1993  
P.O. Box 2872, Dept FR  
Crestline, CA 92325-2872

Available in:  
32 Scales from  
1:12 to 1:700  
Including  
1:20.3, LGB,  
1:29, 1:32, O,  
S, HO, N, TT, Z  
(Eight of these scales  
are available in Metric)

**\$4.95**  
Each

O/S \$5.45 each

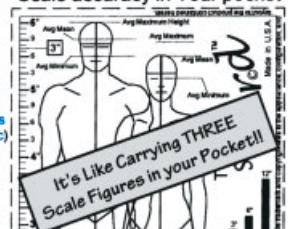
VISA/MC/Disc/AmEx Actual Card is Credit Card Size

Look on the net at: [thescalecard.com](http://thescalecard.com)

or call (909) 338-5018

We also have 24" and 6" rules for Large Scale

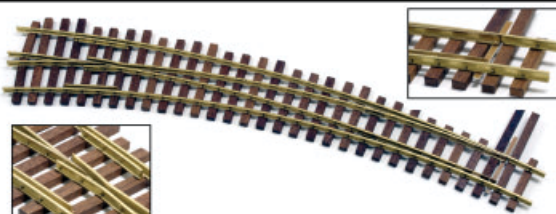
"Scale accuracy in Your pocket"



## THERE'S MORE TO OZ THAN 'ROOS

We're proud to be the exclusive  
US distributor for the fine quality  
Australian-made Code 332  
brass turnouts from  
**OUTBACK TURNOUTS.**

**HANDMADE QUALITY  
AT MASS PRODUCED PRICES.**



PHONE/FAX

**505-466-3477**

**ER** **ELDORADO RAILWAYS**  
28 ENCANTADO LOOP SANTA FE, NM 87505

VISIT OUR WEBSITE

FOR MORE INFORMATION  
[www.ngrail.com](http://www.ngrail.com)

## BARRY'S BIG TRAINS

**SPECIALIZING IN  
DRIVE UNITS  
TO REPOWER BACHMANN  
4-6-0 LOCOMOTIVES**

### NEW - POWER FOR THE "ANNIE"

**New features:** Equalized front axle,  
new lower countershaft drive gear ratio,  
custom machining for the  
10th Anniversary loco.

Our standard drives still available featuring a  
custom extruded black anodized aluminum  
frame, seven pole ball-bearing  
stainless steel axles, revised pilot truck  
suspension, lube port for easy  
maintenance, laser-cut stainless steel  
side rods, and more.

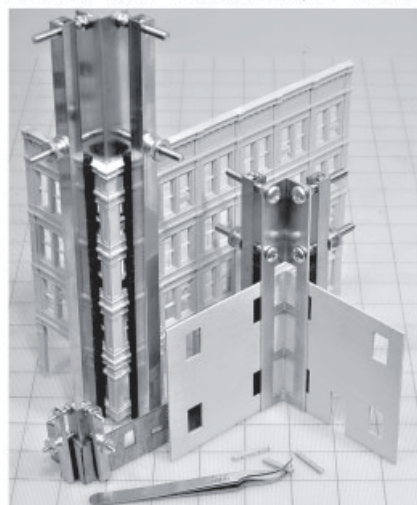
The basic 4-6-0 kit is assembled R-T-R for your  
installation at \$199.95 plus \$5.00 S&H.  
Our installation \$50.00. Also 2-8-0 kits  
and complete R-T-R locos from \$375.00.

Send \$2.00 for BBT DRIVE info, BACHMANN  
TIPS for Locos and Rolling Stock.  
VISA, MasterCard

P.O. Box 1119  
Tolleson, AZ 85353-1119  
Phone: 623-936-6088 FAX: 623-907-0289  
[barrysbigtrains@earthlink.net](mailto:barrysbigtrains@earthlink.net)  
[www.barrysbigtrains.com](http://www.barrysbigtrains.com)

## "The Right Clamp"™ by Coffman Graphic Solutions Co.

"Mini"	AC-2-2	1" Jaw x 5/16" max open	\$20.50 ea
"Original"	AC-1-1	1.5" Jaw x 5/16" max open	\$21.50 ea
"Long"	AC-3-2	2.75" Jaw x 5/16" max open	\$23.00 ea
"Large"	AC-4-2	2.75" Jaw x 5/8" max open	\$24.50 ea
New "4 Inch"	AC-5-1	4" Jaw x 5/8" max open	\$27.50 ea
New "7 Inch"	AC-6-1	7" Jaw x 5/8" max open	\$37.50 ea



**Rubber Clamp pads protect surfaces  
Access Slot to apply glue at inside corner**  
Please add \$3.50 N. Am. or \$8.50 Over-seas shipping per order.  
Kentucky residents add 6% sales tax. Dealer inquiries welcome.  
Check, Money Order or Visa & MasterCard accepted  
Ask your local retailer or order direct from:

### Coffman Graphic Solutions Co.

1500 River Circle Drive, Richmond, KY 40475-7907  
Phone/Fax: 859-527-0485, Home Ph: 859-527-0476  
[www.coffmaneng.com](http://www.coffmaneng.com) [randy@coffmaneng.com](mailto:randy@coffmaneng.com)

## THE ULTIMATE IN REALISM

1:20.3 SCALE MUNGER MINING  
SERIES FOUR WHEEL INDUSTRIAL  
BOXCAR. PRICE \$175.00 + S&H.



## SIERRA VALLEY ENTERPRISES

[WWW.SIERRAVALLEYENTERPRISES.COM](http://WWW.SIERRAVALLEYENTERPRISES.COM)

CUSTOM BUILT, READY-TO-RUN  
1:20.3 SCALE ROLLING STOCK  
PRICES FOR MUNGER MINING SERIES FOUR-WHEEL  
INDUSTRIAL ROLLING STOCK RANGE FROM \$85.00 FOR  
THE FLATCAR TO \$205.00 FOR A TOOL CAR  
PLUS \$10.00 SHIPPING AND HANDLING.  
PRICES INCLUDE SIERRA VALLEY METAL WHEELSETS,  
OUTSIDE HUNG BRAKE BEAMS, AND YOUR CHOICE OF  
KADE® (\$5.00 EXTRA) OR LINK-AND-PIN COUPLERS.  
CALIFORNIA RESIDENTS PLEASE ADD 7.25% SALES TAX.

SEND \$2.00 FOR INFORMATION PACKET  
**SIERRA VALLEY ENTERPRISES**  
2755 SARATOGA AVENUE, MERCED, CA 95340



## 1:20 ★ HERMOSA CREEK PONY TRUSS BRIDGE ★ 1:20

Fully Assembled  
Mahogany with  
Blackened Brass  
Hardware

9"x7"x36"



**\$415.00**

Free shipping  
lower 48

Catalog \$5.00

**LONE STAR BRIDGE 1 ★ 888 ★ 548 ★ 5656**

P.O. BOX 122041, ARLINGTON, TEXAS 76012  
WWW.LONESTARBRIDGE.COM

## RIO GRANDE SOUTHERN RAILROAD HOBBIES

SPECIALIZING IN COLORADO NARROW GAUGE  
CUSTOM SOUND, BATTERY, AND RC INSTALLATIONS ARE AVAILABLE.

VISIT US AT [WWW.RGSRRHOBBIES.COM](http://WWW.RGSRRHOBBIES.COM)

PHONE 970-626-3733

6997 COUNTY ROAD 5 • RIDGWAY, CO 81432-9732



## Gold Mill Equipment 1:20.3 scale

Our highly detailed gold mill equipment in O, S, and HO scales is now available in 1:20.3 scale. With the descriptions and plans in our book, "Modeling the Mining Industry: Gold and Silver Stamp Mills", you can build the gold mill you have always wanted for your large scale railroad

rock crusher	MF-82	\$39.00
ore bin gates (2)	MF-83	18.00
grizzly	MF-84	24.00
ore feeder (2)	MF-85	49.00
clean-up barrel	MF-86	24.00
10-stamp battery	MF-87	129.00
Wilfley table (2)	MF-88	89.00
mill pulley/bearings	MF-89	29.00



*stamp battery with amalgamation tables*

## Western Scale Models

19441 Business Center Drive #107  
Northridge, CA 91324 (818) 341-7862



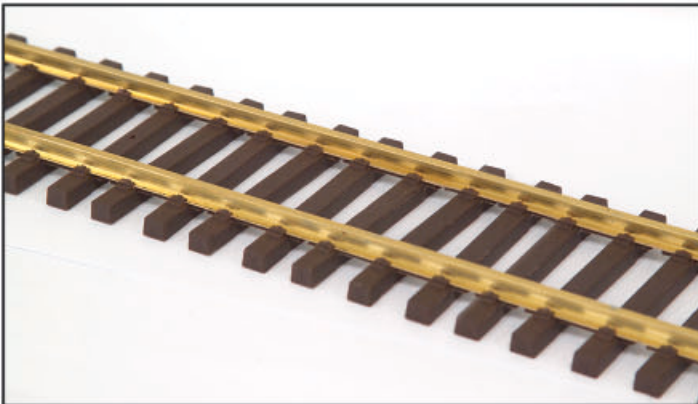
Website: [www.westernscalemodels.com](http://www.westernscalemodels.com)  
e-mail: [bill@westernscalemodels.com](mailto:bill@westernscalemodels.com)



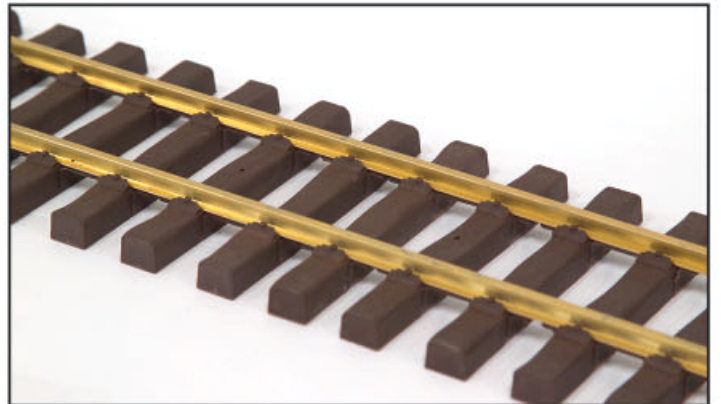
# The Fun Just Never Ends



Big Boy 4-8-8-4  
1:32 Scale, 45mm Gauge, Available Spring 2006



Standard Gauge Tracks

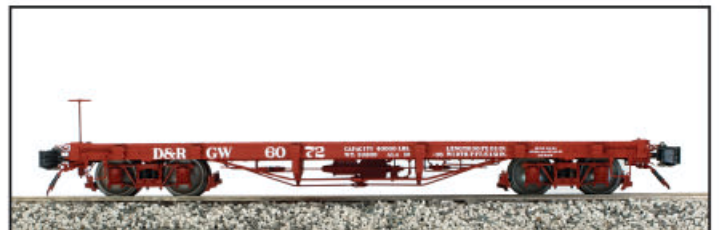


Narrow Gauge Tracks

**Limited Time Special Offer**  
**Buy 4 AMS Cars and Get 1 Free!**



D&RGW Gondolas



D&RGW Flat Cars

**AMS**  
**TRUE TO SCALE**

33268 Central Avenue Union City, CA 94587, USA  
Tel: (510) 324-3399 Fax: (510) 324-3366  
[www.amstrains.com](http://www.amstrains.com)